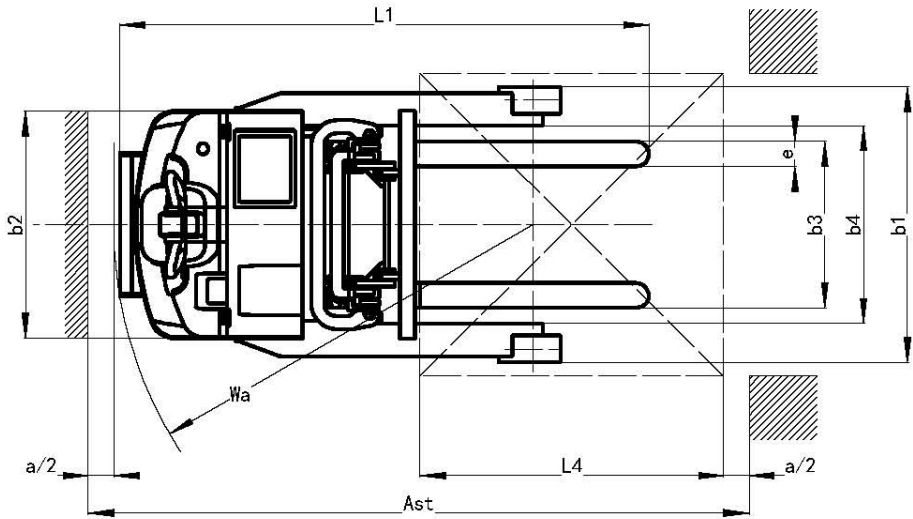
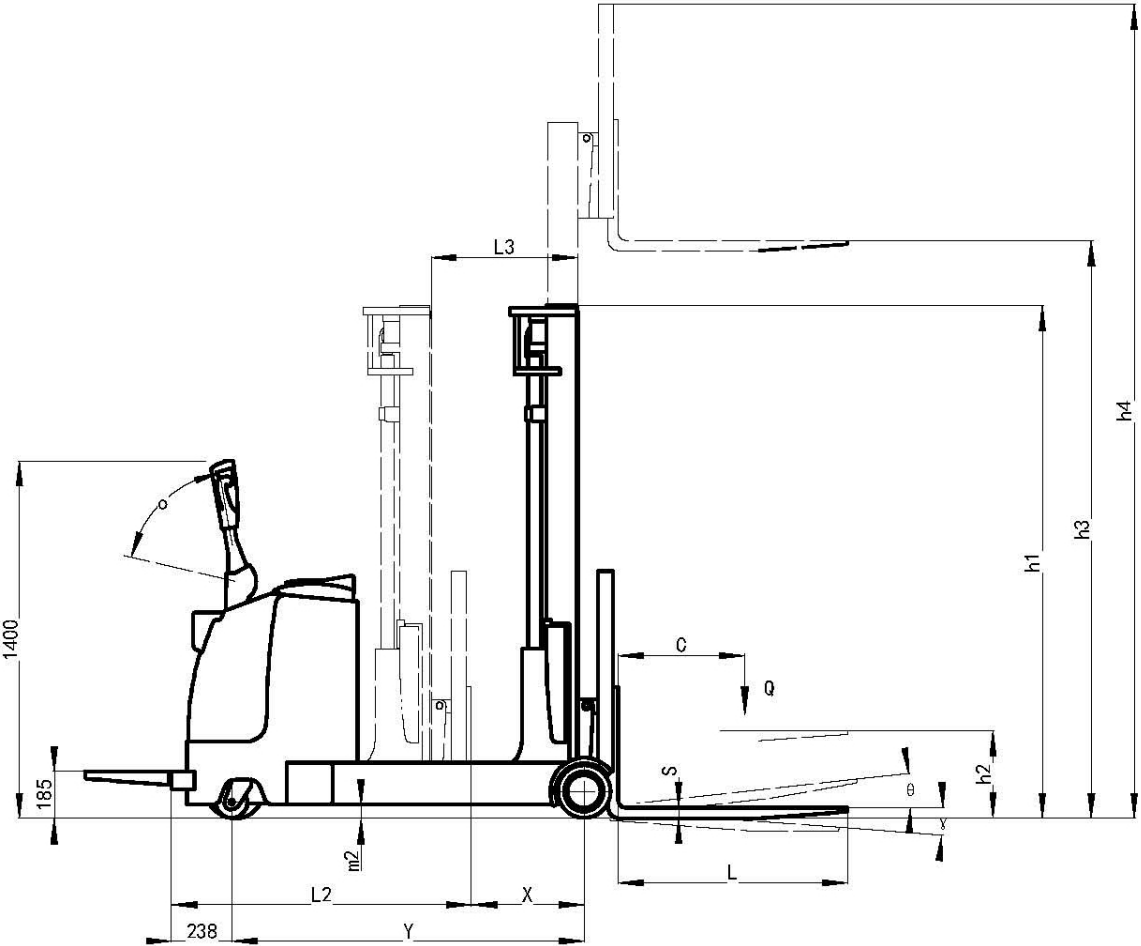


Electric Reach Stacker XR 1500



- # Battery side extraction
- # Widen view mast
- # Fork tilt forward / backward
- # Regenerative braking function
- # CURTIS Electronic Controller from Europe
- # Germany FREI handle
- # Italian HYDRAPP Hydraulic system
- # Germany Mannstaedt steel for mast
- # Vertical driven wheels
- # Imported separately excited electric control
- # Frei tiller, original device Germany
- # Sideways battery exit
- # Widen mast views

Electric Reach Stacker



Electric Reach Stacker

TECHNICAL DATA				MODEL			
Identification	1	Product type designation		XR 1516	XR 1520	XR 1525	XR 1530
	2	Drive unit		Electric			
	3	Operator type		Standing			
	4	Load capacity	Q kg	1500			
	5	Load center	C mm	500			
	6	Load distance,centre of drive axle to fork face	X mm	446			
	7	Wheelbase	Y mm	1390			
Weight	8	Truck Weight(without battery)	kg	1700			
	9	Axle loading,loaded(front/rear)	kg	1338 / 2112			
	10	Axle loading,unloaded(front/rear)	kg	1372 / 578			
Wheel	11	Tyres		Polyurethane			
	12	Driven wheels size	mm	ø 230 × 75			
	13	Loaded wheels size	mm	ø 210 × 85			
	14	Balance wheels size	mm	ø 125 × 60			
	15	Wheels number,(front/rear)(x=driven wheels)		1 x - 2 / 2			
	16	Tread,front	mm	740			
	17	Tread,rear	mm	985			
Dimensions	18	Height,mast lowered	mm	1780			
	19	Overall height	h1 mm	2030	1780	1780	2030
	20	Free lift	h2 mm	1000	90	90	90
	21	Lift height	h3 mm	1600	2000	2500	3000
	22	Height,mast extended	h4 mm	2540	2940	3440	3940
	23	Forks height,lowered	h5 mm	40			
	24	Height of tiller in drive position(max/min)	h6 mm	1380 / 1020			
	25	Overall length	L1 mm	2090			
	26	Length to face of forks	L2 mm	1185			
	27	Overall width	b1 mm	1090			
	28	Fork dimensions	s/e/l mm	100 / 40 / 905			
	29	Maximum forks width	b3 mm	200 - 720			
	30	Reach length	L3 mm	580			
	31	Maximum ground clearance	m mm	55			
	32	Aisle width for pallets 1000×1200 lengthways	Ast mm	2410			
	33	Aisle width for pallets 800×1200 lengthways	Ast mm	2610			
	34	Turning radius	Wa mm	1656			
	35	Inside width between the guides	b4 mm	780			
Performance	36	Travel speed loaded/unloaded	km / h	4.8 / 5.6			
	37	Lift speed loaded/unloaded	mm / s	90 / 120			
	38	Lowering speed loaded/unloaded	mm / s	125 / 80			
	39	Max gradeability loaded/unloaded	%	5 / 8			
	40	Service brake		Electromagnetic brake			
Electric Motor	41	Drive motor rating	kw	1.5			
	42	Lift motor rating	kw	2.2			
	43	Battery voltage/capacity	V / Ah	24 / 240			
	44	Battery weight	kg	250			
Others	45	Control unit type		MOSFET control			
	46	Sound level	dB (A)	<70			
SPECIFICATION IS SUBJECT TO CHANGE WITHOUT NOTICE							

Height Data

MODEL			XR 1533	XR 1537	XR 1540	XR 1542	XR 1545	XR 1548	XR 1550	XR 1552	XR 1555
1	Overallheight	h1 mm	2180	2380	2350	1960	2060	2160	2230	2300	2400
2	Free Lift	h2 mm	90	90	90	1400	1500	1600	1660	1720	1820
3	Lift Height	h3 mm	3300	3700	4000	4200	4500	4800	5000	5200	5500
4	Maximum height	h4 mm	4240	4640	4940	5040	5340	5640	5840	6040	6340
5	Battery voltage/capacity		24 / 240	24 / 240	24 / 240	24 / 240	24 / 240	24 / 280	24 / 280	24 / 280	24 / 280